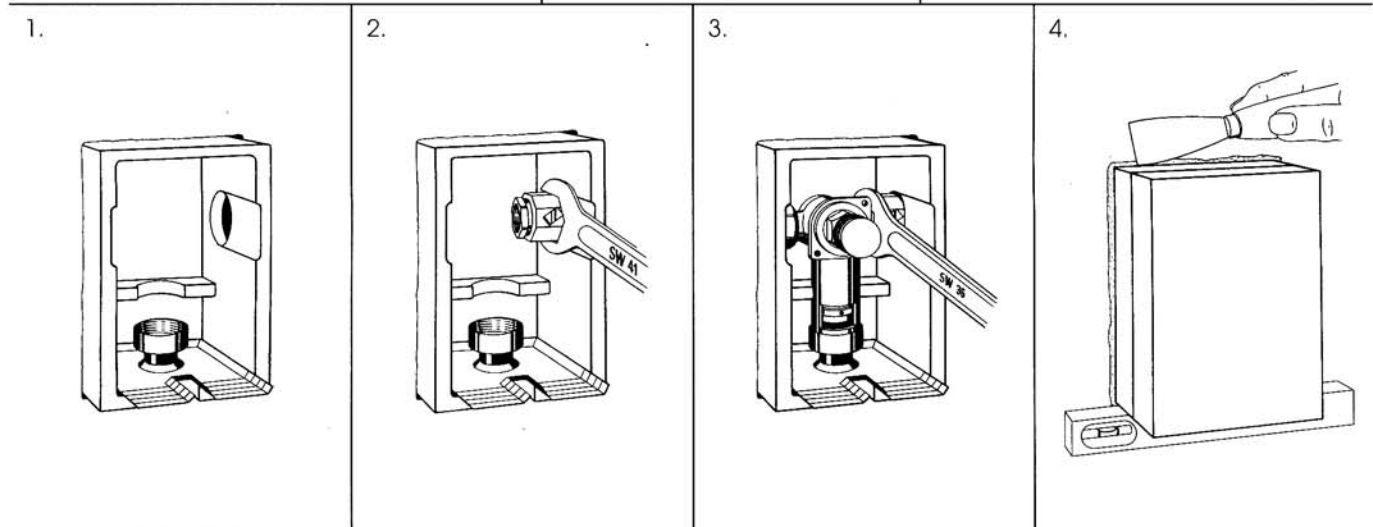
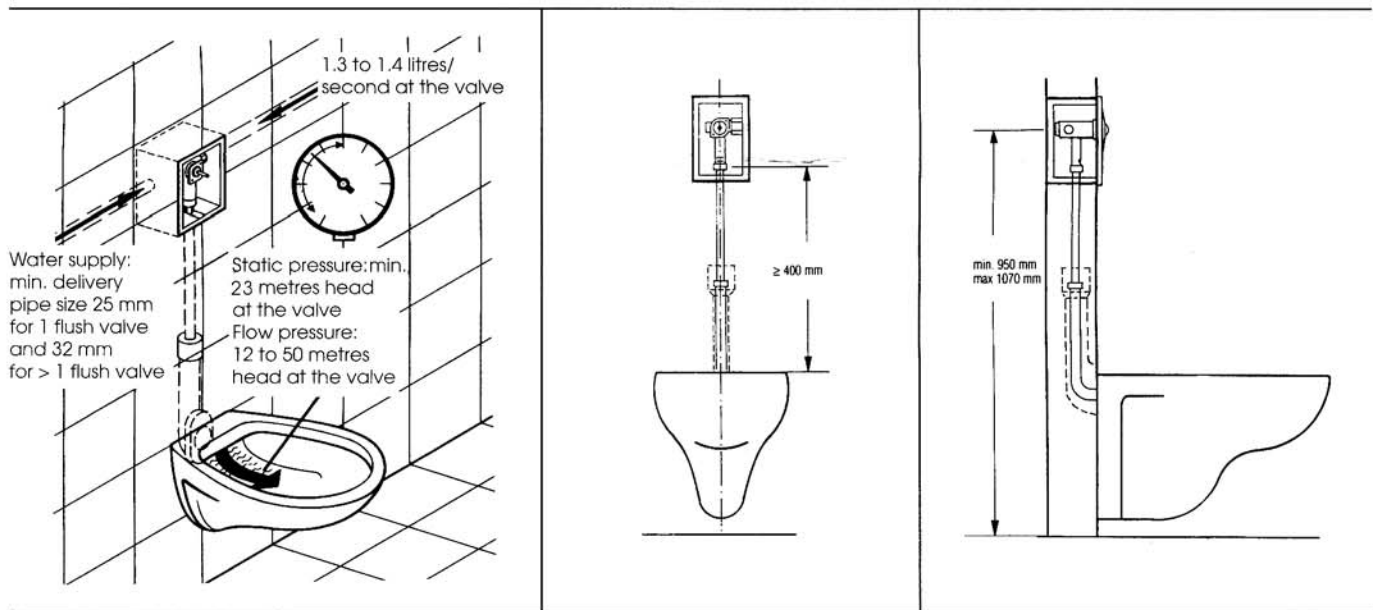
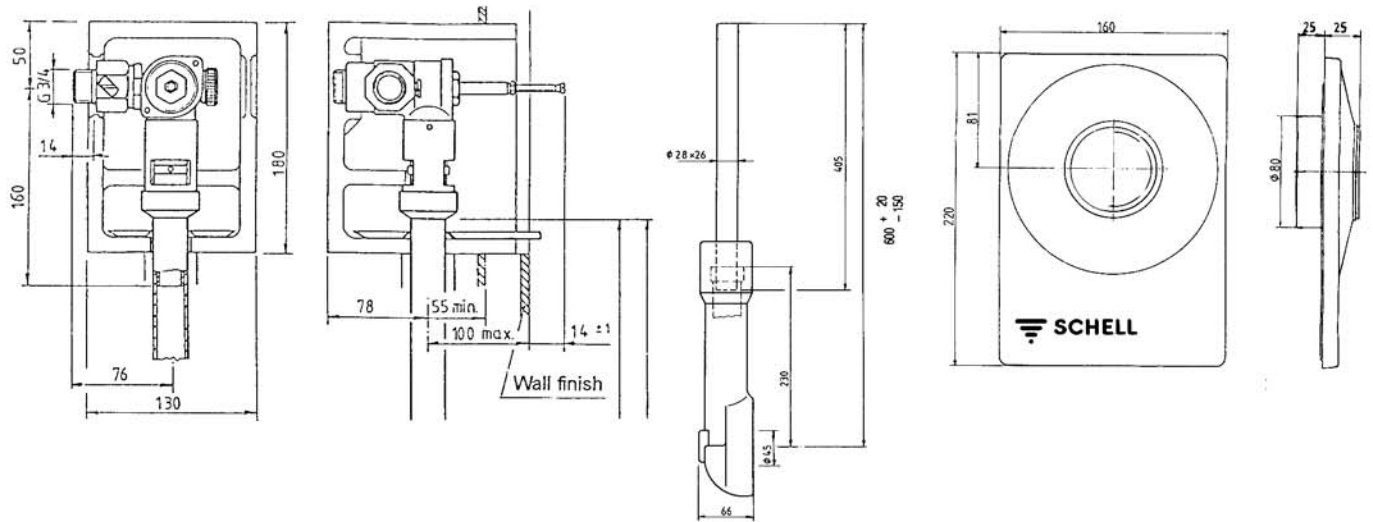
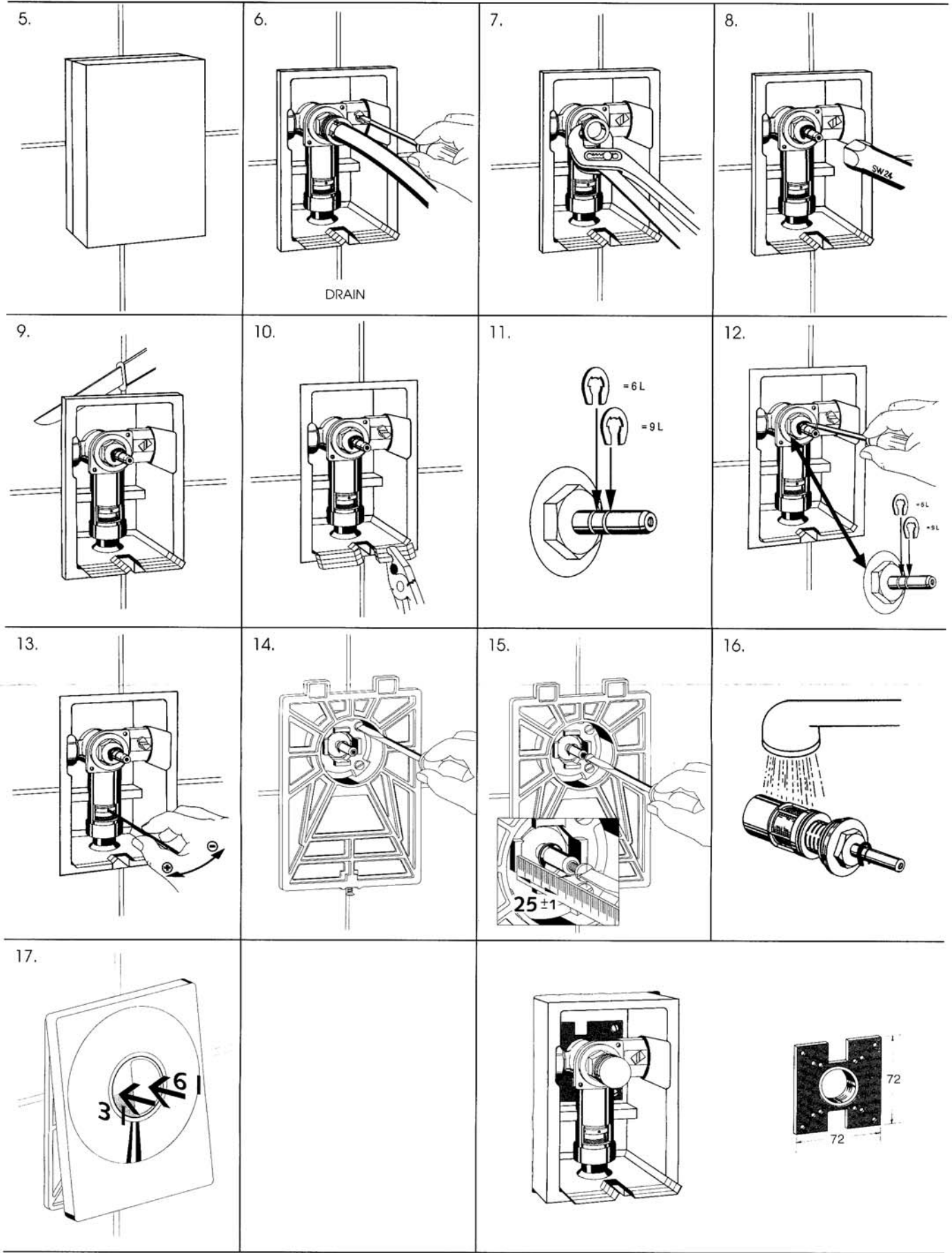


WC flush valve



Assembly and instructions





Disturbance	Possible reason	Remedy	Fig.
Flushing time too short	Sleeve dried-up	Water sleeve	16
	Sleeve defective	Change cartridge	8
Continuous flushing	Piston seal or relief valve defective	Change cartridge	8
Amount of water too high or too low	Stop ring missing or wrong assembled	Correct assembly of stop ring	11+
Flush too low	Preliminary shutoff not fully opened	Open preliminary shutoff	6
	Cartridge sieve dirty	Rinse cartridge	16
	Flush adjustment too low	Adjust flush	13
	Flow pressure too low ($p < 12$ metres head)	Check flow pressure	
Flush too strong	Flush adjustment too strong	Regulate flush	13
	Flow pressure too high ($p > 50$ metres head)	reduce flow pressure	