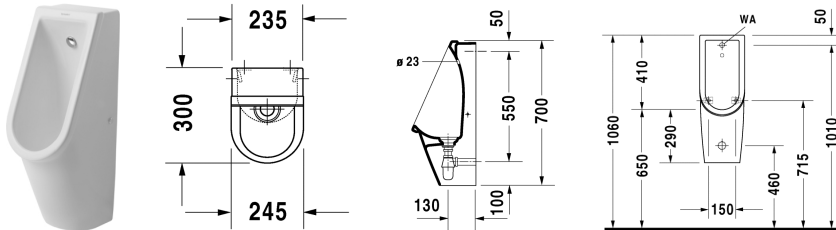


Urinal # 082725..00 / 082725..07

|< 245 mm >|

Starck 3



Urinal	Dimension	Weight	Order number
concealed inlet, without flushing rim, for 1/2" connection, includes jet nozzle, inlet set, ceramic covered slotted waste Ø 72 mm, bottle trap Ø 32 mm and fixings Additional information When using GEBERIT pre-wall carriers model range Duofix #111.685 / Kombifix #457.685 / GIS #461.685 (available up to and including 2008), mandatory in combination with inlet traverse # 242.040.00.1 for 1/2" inlet connection / When using GEBERIT pre-wall carriers model range Duofix #111.616 / Kombifix #457.611 / GIS #461.621 (available from Jan. 2009), mandatory in combination with inlet adapter # 242.042.00.1 for 1/2" inlet connection / In combination with adjustable in-wall flushometers			
Colors			
00 White Alpin			
Variant			
	245 x 300 mm	18,250 kg	082725..00
	245 x 300 mm	18,250 kg	082725..07

All drawings contain the necessary measurements which are subject to standard tolerances. They are stated in mm and are non-binding. Exact measurements, in particular for customised installation scenarios, can only be taken from the finished ceramic piece.

REMINDER:	Pipe flushing must be done before faucets are installed. Failure to do so voids the warranty.
	Do not use cleaners containing abrasive cleansers, ammonia, bleach, acids, waxes, alcohol, solvents or other products not recommended for chrome.
	All information is for reference only, installation shall always be based on the actual product delivered.