

BLUTECH



KUYSEN TILES

Glazed Porcelain, Double loading – Wall/Floor

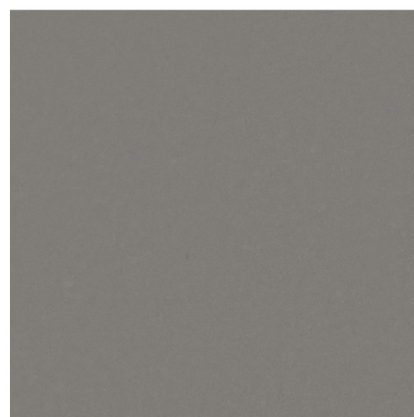
- Double loading - this exclusive and patented technological process, the purest micronized raw materials and granules of colored stoneware are fully combined in two overlapping layers which are then pressed together with the pressure of 7,500 tones. This perfect compaction gives the product an extraordinary resistance to impact.

		SIZE (MM)	(p/sqm – for reference)	p/pc
BGGBT362	Bianco Perlata	900x900x11	10,315.00	8,355.00
BGGBT562	Cenere Perlata	900x900x11	10,050.00	8,140.00

- Perlata: matte polished with soft, precious and extraordinarily beautiful surface, like no other in the world.

Design Trend: STONE

REQUEST UPDATED PRICES FOR INDENT ORDERS



Cenere



Bianco

SUGGESTED APPLICATIONS



WALL



FLOOR

NUMBER OF PATTERNS

TILE SHADE VARIATION



LOW SHADE
VARIATION



EXCLUSIVE DISTRIBUTOR

Blustyle
CERAMICA

All our tiles conform their specific European Norms (UNE EN 14411). We guarantee their characteristics except in cases of damages due to bad setting or of improper use.

IMPORTANT REMINDERS ON INSTALLATION:

- Before tile setting, please verify shade, caliber and grading. Claims regarding these items cannot be accepted after tile setting.
- Recommended spacing for rectified tiles = 2 mm apart
- We recommend no more than 33% offset when laying the tiles in a staggered pattern.