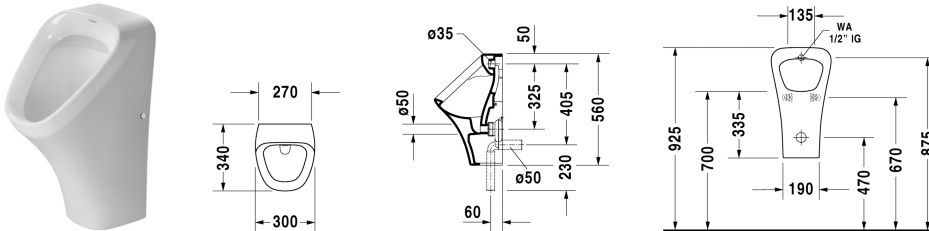


DuraStyle Urinal # 280430..00 / 280430..07

| < 300 millimetre > |



Urinal	Dimension	Weight	Order number
concealed inlet, syphonic action, vertical or horizontal outlet, fixings included			
Colors			
00 White Alpin 20 HygieneGlaze (an antibacterial ceramic glaze that provides almost indefinite effectiveness)			
Variant			
model without fly	300 x 340 millimetre	15.400 kilogram	280430..00
model with fly	300 x 340 millimetre	15.400 kilogram	280430..07
Sanitary ceramics with the special WonderGliss surface finish will remain clean and attractive-looking for a long time to come. When ordering WonderGliss please add a "1" as eleventh digit to the model number.			
Accessory			
Siphon 1 - 4 L, horizontal outlet (concealed)	ø 50 millimetre	0.200 kilogram	005112
Siphon 1 - 4 L, vertical outlet	ø 50 millimetre	0.200 kilogram	005111
Water inlet mechanism for urinals with back supply	1/2" millimetre	0.100 kilogram	695800

All drawings contain the necessary measurements which are subject to standard tolerances. They are stated in mm and are non-binding. Exact measurements, in particular for customised installation scenarios, can only be taken from the finished ceramic piece.

REMINDER:	Pipe flushing must be done before faucets are installed. Failure to do so voids the warranty.
	Do not use cleaners containing abrasive cleansers, ammonia, bleach, acids, waxes, alcohol, solvents or other products not recommended for chrome.
	All information is for reference only, installation shall always be based on the actual product delivered.