



Brand: INAX, Japan
Name: SATIS G Integrated Spalet
Item Code: SGW

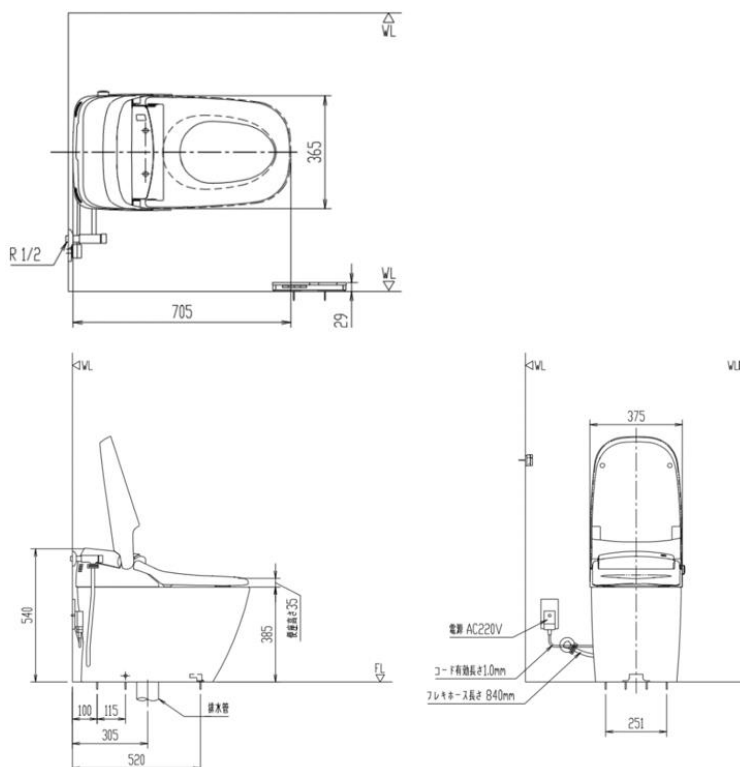
Designer:

Color / Finish: White

Dimensions: 705(L) x 375(W) x 540(h) mm

Product info:

- Triple vortex flushing
- Aqua Ceramic technology: yellow or water stains cannot on bowl
- 4.2/6lpm dual flushing (S-trap), AC220V/50/60Hz
- Instant heating, auto flushing, auto open/close seat and cover
- Seamless seat
- SIAA anti bacteria
- Foam cushion technology
- Plasma cluster
- Air shield deodorizer
- Dual self-cleaning nozzles for front and rear cleansing
- Adjustable water pressure, nozzle positioning and water temperature
- Heated seat with adjustable seat temperature, night light



Flushing of pipe must be done before fittings are installed. Failure to do so voids the warranty.

Follow cleaning instructions and avoid using any harmful chemicals.

All information is for reference only. Installation shall always be based on the specs provided with actual delivered items.

For more info, visit www.kuysen.com