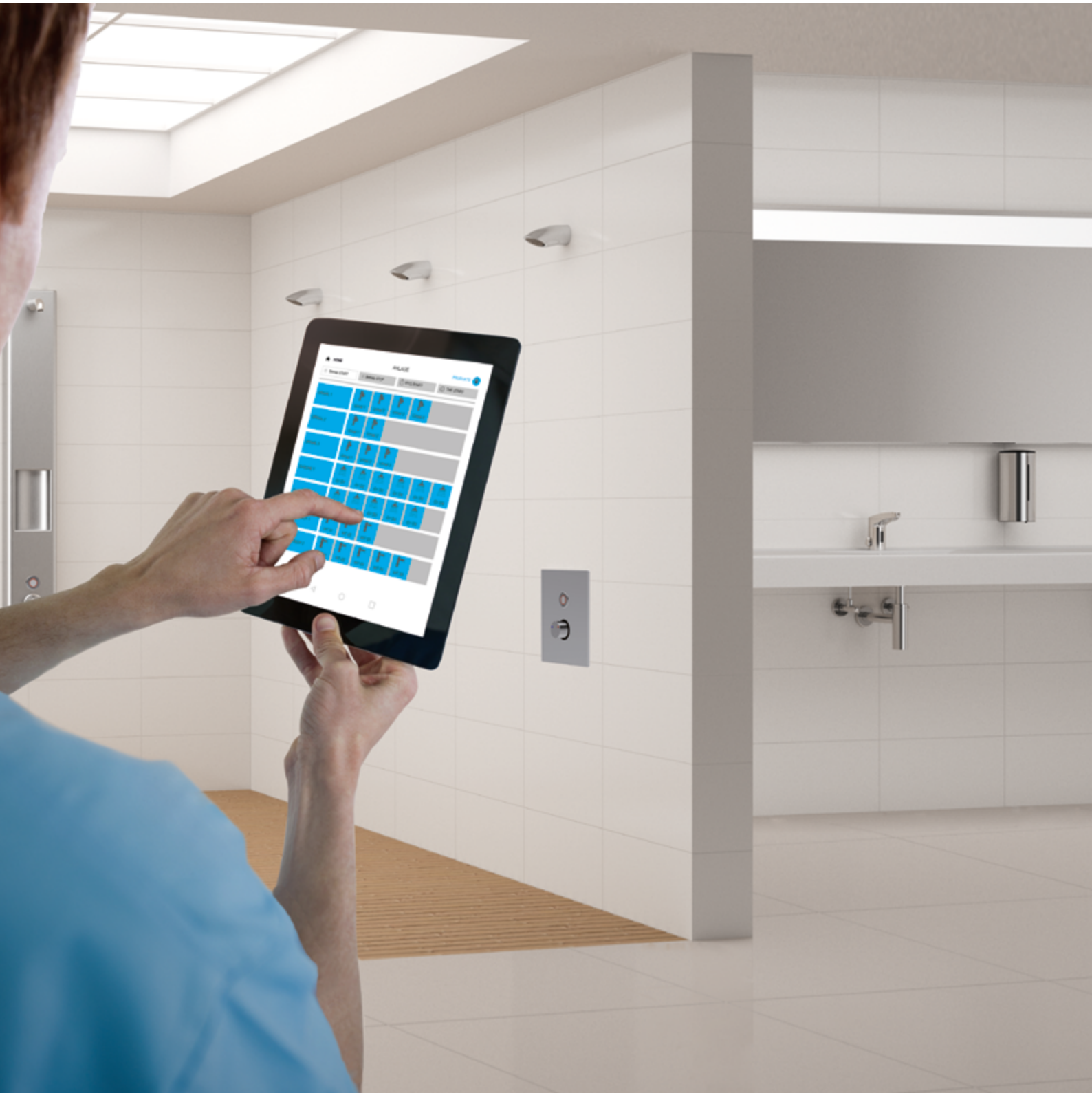


Washroom & Shower room solutions

Public. Commercial. Hotels



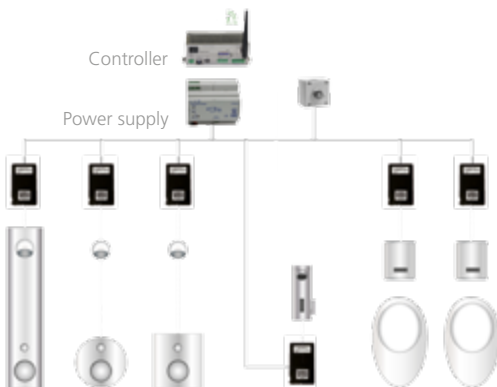
CNX Water Management System

Innovative and reliable

CNX water management system presents the most advanced level in new electronic modular product ranges. In addition to the proven CONTI+ shower taps, it can integrate our electronic washbasin taps and urinals.

With the CNX Controller, up to 150 taps or other devices can be managed from a central point.

Thanks to the integrated web server, using a PC, tablet or smartphone, we can adjust settings, call up status information, activate devices and functions and look up recorded data wirelessly.



Innovation and its strength

- integration of electronic showers, taps and urinals from the CONTI+ range
- one controller for up to 150 taps
- linear, star or tree layout
- intuitive and simple user interface
- data transferred via LAN, WLAN
- lifecycle data storage
- ensuring highest hygiene requirements
- reports in PDF format, saved to SD card
- protected against short circuit and reverse polarity
- no loss of data in the event of a power cut
- easy integration and installation tailored to individual requirements; user friendly to service
- compliance with the highest safety standards

CNX Water Management System applications

Buildings with high functionality and hygiene levels

Technology meets Design

Public. Commercial. Hotels

Innovative technology, superior materials and elegant design make CONTI+ products the appliances of choice in both commercial and public sanitation areas. The range includes a wide selection of sanitation products such as taps, shower units, washbasins, urinals/WCs, Kneipp equipment, accessories, thermostatic mixer taps. They provide everything you would expect to find in a contemporary restroom: ecologically sound water saving products, touch-free functions and the highest levels of hygiene. CONTI+ has ideal solutions for both security and protection against vandalism too. Unique service concepts make electronic taps as reliable to use as mechanical single lever taps. The programmable sanitary flushing and thermal disinfection via CNX water management system of individual fittings safeguard hygiene and potable water quality.



Hospitals and hygiene

The sanitary fittings in hygienically sensitive washing areas like hospitals, care homes, doctors' offices and food production companies are subject to particularly stringent requirements: cleanliness of washing areas, easy cleaning, regular hygienic rinse and thermal disinfection. Touch-free operation is particularly beneficial in these applications because it helps to prevent the transmission of germs and bacteria.

CONTI+ taps and shower fittings offer excellent hygiene performance and comply with drinking water regulations. The electronically controlled operation of the fittings makes them particularly economical because no water is wasted.



The anti-scalding feature along with the thermic protection make them safe to use. The fittings are hygienically safe thanks to their individually adjustable hygienic rinse function at 12, 24, 48, or 72-hour intervals and the option of thermal disinfection.

The adaptive multifunctional CONGENIAL forms the basis for numerous CONTI+ showers. Their upgrade options are therefore unique: a large number of options for extending and changing the showers and service functions are thus available. The modular design, as well as



extensive functionality are the key features of CONTI+ showers. Permanent cost saving and comfort define the choice of CONTI+ shower systems in public and semipublic areas. The adaptive multi-function CONGENIAL is the ideal basis of the CONTI+ shower systems and allows versatile modifications and upgrades: from the simple mechanical functions up to electronically operated shower systems. The quick and easy integration of CNX Water Management System into CONTI+ products brings additional control and compliance with the highest safety standards.

Shower room solutions

Concealed shower taps



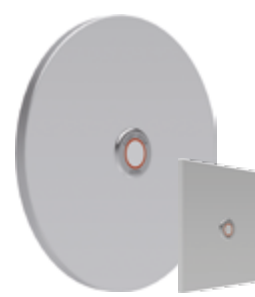
Electronic timed flow shower with thermostat

- DN15 or DN20
- round and rectangular cover plate
- electronic START/STOP function
- with/without thermostatic mixer incl. anti-scalding protection
- with/without thermal disinfection
- CNX water management system compatible



Mechanical timed flow shower with thermostat

- DN15 or DN20
- round and rectangular cover plate
- electronic START/STOP function
- with/without thermostatic mixer incl. anti-scalding protection
- with/without thermal disinfection
- CNX water management system compatible



Electronic timed flow shower

- DN15 or DN20
- round and rectangular cover plate
- electronic START/STOP function
- without thermostatic mixer
- with thermal disinfection

Shower panels



Shower panel in stainless steel & AVW

- electronic or mechanical
- with/without integral tray
- DN15
- thermostatic mixer incl. anti-scalding protection
- with/without thermal disinfection
- CNX water management system compatible

Freestanding showers



Freestanding shower in stainless steel

- straight or curved shape
- DN15
- electronic START/STOP function
- thermostatic mixer incl. anti-scalding protection
- CNX water management system compatible

Exposed shower taps



Exposed electronic shower taps

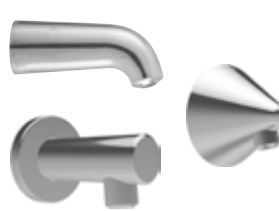
- electronic START/STOP function
- outlet should point up or downwards
- hygienic rinse

Shower heads



Rain shower heads

- compatible with shower panels and concealed showers
- adjustable flow angle 11° to 21°
- easy to clean with a removable shower base
- chromed



Jet shower heads

- compatible with shower panels and concealed showers
- different spray types and spray angles
- theft-proof fixings
- chromed

Hand shower kit



Handheld shower kit

- compatible with shower panels and concealed showers
- single handed
- height adjustment without twisting
- stainless steel matte / chromed

Washroom solutions

Electronic washbasin taps



Senso washbasin tap

- with IR-sensor, with electronic mixing
- electronically touch-function
- motion and temperature indication through incorporated LED's
- illumination of the water jet (white)



Lino/Tipolino washbasin taps

- touch-free, electronically controlled or with electronic START/STOP function
- with/without mixing, pressureless
- battery, mains operation, solar, VARIOconnect
- CNX water management system compatible
- chromed



Ultra washbasin taps

- touch-free, electronically controlled
- 3 sizes, with/without mixing
- including preliminary shut-off
- battery, mains operation, solar, turbine, VARIOconnect
- CNX water management system compatible
- chromed



Loopino washbasin taps

- touch-free, electronically controlled
- with/without mixing, pressureless
- battery, mains operation, VARIOconnect
- CNX water management system compatible
- chromed



IQ washbasin taps

- touch-free, electronically controlled
- with/without mixing, pressure less
- battery, mains operation, VARIOconnect
- 12, 24, 48-hour hygienic rinse
- CNX water management system compatible
- chromed



Maxx washbasin taps

- touch-free, electronically controlled
- with/without mixing, pressure less
- battery, mains operation, VARIOconnect
- 12, 24, 48-hour hygienic rinse
- CNX water management system compatible
- chromed



Umaxx washbasin tap

- touch-free, electronically controlled
- without mixing (cold or pre-mixed water)
- small external reliable solenoid valve
- battery, mains operation, VARIOconnect
- 12, 24, 48-hour hygienic rinse
- chromed



H10 kitchen tap

- hybrid kitchen faucet
- hygienic rinse adjustable
- spout 360 ° swiveling
- sensor faucet with single lever mixer
- battery, mains operation, VARIOconnect
- CNX water management system compatible
- chromed

Self-closing taps



Tipolino self-closing taps

- electronic START/STOP function
- with/without temperature-mixing
- battery, mains-operation, VARIOconnect
- continuous water flow time adjustable
- 12, 24, 48-hour hygienic rinse



Ultra wall-mounted taps

- touch-free, electronically controlled
- without temperature-mixing
- integrated shut-off valve (TwistStop)
- battery, solar, VARIOconnect
- energy saving function (solar)
- chromed



Lino wall-mounted taps

- touch-free, electronically controlled
- with/without temperature-mixing
- temporary-off and continuous water flow
- hygienic rinse adjustable
- adjustable scald protection
- battery, VARIOconnect
- chromed



Lino exposed wall-mounted taps

- touch-free, electronically controlled or with electronic START/STOP function
- with anti-scalding and thermic protection
- temporary-off and continuous water flow
- hygienic rinse adjustable
- chromed

Electronic wall-mounted taps

Urinals/toilets and sanitary equipment

Urinal flush valve



Concealed urinal flush valve

- touch-free, electronically controlled
- double infrared sensors
- reliable solenoid valve
- battery, mains operation, VARIOconnect
- CNX water management system compatible
- stainless steel / glass black/white
- frame chrome plated



Concealed urinal flush valve (solar)

- touch-free, electronically controlled
- reliable solenoid valve
- dynamic sensor: constantly adjusts the optimum of range
- battery, solar, mains operation, VARIOconnect
- CNX water management system compatible
- chromed, window white



Exposed urinal flush valve

- touch-free, electronically controlled
- short-time out
- hygienic rinse and pre-rinse activatable
- battery, solar
- chromed



Urinal siphon regulator

- touch-free, electronically controlled
- mounted behind the urinal
- stadium operations
- flush volume 1 - 4 l/min or 2 - 8 l/min
- overflow protection
- mains operation

Toilets / Urinal



SteelTec Malm seatless toilet

- profiled foot surface
- connection from behind
- for common toilet wall mounted flush valves DN20 and cisterns
- stainless-steel



Wall-mounted toilet

- seat color selectable
- for common toilet wall mounted flush valves and cisterns
- stainless-steel



Urinal

- vandal-proof version
- wall mounting or rear panel mounting
- with mesh drain
- with spray nozzle
- shiny stainless-steel inside, outside matt



Partition for wall mounting

- with concealed wall bracket
- accessory for SteelTec Oslo urinals
- dimensions: 80 x 383 x 1092 mm
- stainless-steel

SteelTec accessoires



Accessoires

- toilet brush
- bath grip
- soap-dispenser
- towel dispenser
- hygienic bin
- paper waste bin and many more...



Hand dryer electronic

- wall-mounted
- with locking and vandal-proof
- adjustable activation distance
- with induction motor
- stainless steel matt



Soap-dispenser electronic

- for liquid soap, foam soap and disinfectant
- wall-mounted
- with locking and vandal-proof
- battery, mains operation
- dosing regulation
- stainless steel matt



Design series BJÖRK

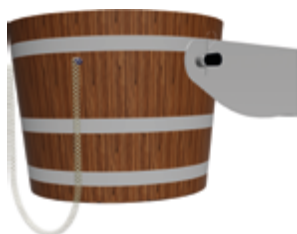
- touch-free, electronically controlled soap-dispenser
- touch-free, electronically controlled hand dryer
- baby diaper-changing table (load capacity up to 150 kg)
- available in black/matt, white and all RAL colors

Wellness solutions

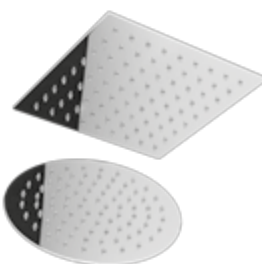
Wellness & Spa



- Kneipp equipments**
- Kneipp gush
 - flash affusions
 - concealed fittings
 - chromed



- Downpour/bucket shower**
- for wall or ceiling mounting
 - for indoor and outdoor use
 - wood bucket made of Iroko

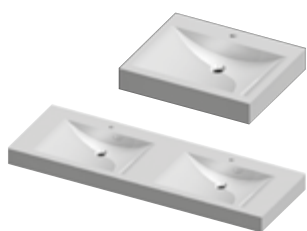


- Rain shower heads**
- square and round rain shower
 - wall and ceiling mounting
 - shower pipes and shower arms can be combined
 - chromed

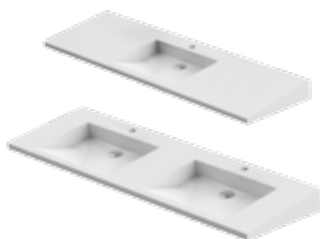


- Spiked and jet shower heads**
- DN15 and DN20
 - wall and ceiling mounting
 - shower pipes and shower arms can be combined
 - chromed

StoneTec / StoneTec-PRO washbasins



- Single and double washbasins**
- fixed measure
 - angular, semi-circular, round, oval basins
 - resin-bonded mineral casting/mineral material
 - white glossy / white matt



- Customized washbasins**
- customized
 - single, double and row washbasins
 - angular, semi-circular, round, oval basins
 - resin-bonded mineral casting/mineral material
 - white glossy / white matt



- Niche washbasins**
- customized varying lengths
 - single, double and row washbasins
 - angular, semi-circular, round, oval basins
 - resin-bonded mineral casting/mineral material
 - white glossy / white matt



- Barrier-free washbasins**
- for barrier-free range according to DIN 18040-1 und 18040-2
 - available in variable widths
 - resin-bonded mineral casting/mineral material
 - white glossy / white matt

SteelTec washbasins



- Wash trough design washbasins**
- for wall mounting
 - with/without hygiene edge
 - with/without drain valve
 - with/without tap holes
 - with/without overflow
 - stainless steel matt



- Washbasins**
- stainless-steel
 - with overflow
 - with covered grid strainer
 - washboard stamping at front side
 - integral hygiene edge
 - with wall brackets



- Bucket and laboratory sink**
- for wall mounting
 - with wall panel
 - with/without plug
 - with/without bucket grid
 - stainless steel matt



- Drinking fountain**
- stainless-steel
 - for wall mounting
 - drinking fountain-tap included
 - adjustable flow rate
 - push button, self-closing
 - vandal-proof version

Technology meets Design

The guiding principle of CONTI+ is to create ecological water saving products, that bring added value through simplicity of use and hygiene. Longterm experience in water saving and water management are consequently implemented in our sanitary solutions.

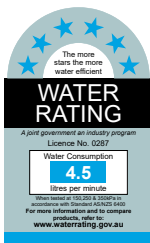
Modern design, reliability, user friendly, easy installation and maintenance are crucial claims.

CONTI+ is known for driving innovation by applying new and proven technologies to improve overall hygiene, water saving and energy.

Therefore, CONTI+ is a leading brand for electronic sanitary products.

Swiss Quality

Aquis Systems AG
Balgacherstrasse 17
CH-9445 Rebstein, Switzerland
phone +41 71 775 9500
fax +41 71 777 1641
info@aquis.ch
www.conti.plus



*Certificates are product related and not valid in general

